



Annainin (Guide) Recommended

## Gourmet Spots

Shukutsu area has prospered due to herring fishing, and its fishing port is great for fresh local seafood. Below are several restaurants we recommend in this district.

M A P

1

### Marina Shokudo

You can dine on the background of the Ishikari Bay and the yachts moored there. The restaurant serves a variety of seafood dishes and more.

🏠 3-197 Shukutsu ☎ +81-134-32-0425  
🕒 9:00-17:00 (Late Mar.-Early Nov.)  
📅 Irregular Holidays (Closed Nov.3-late Mar.)

M A P

2

### Inn Aotsuka Shokudo

In addition to herring dishes, the inn serves seasonal seafood at affordable prices.

🏠 3-210 Shukutsu ☎ +81-134-22-8034  
🕒 10:00-20:00  
📅 Irregular Holidays

M A P

3

### Restaurant Blau Kuste

Located inside Hotel Neushloss Otaru, the restaurant is popular for its unique French dishes using local ingredients.

🏠 3-282 Shukutsu ☎ +81-134-22-9111  
🕒 [Lunch] Seating times are 12:00, 12:30, and 13:00 (closes at 14:30)  
[Dinner] 17:00-22:00 (last entry at 20:30)  
Times may change depending on circumstances.  
📅 Dec.-late Mar. (Closed for lunch)

M A P

4

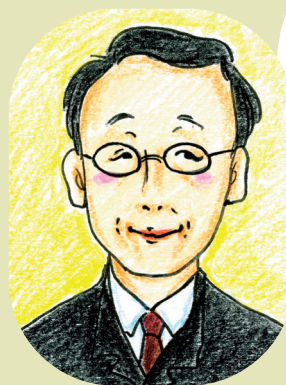
### Japanese Restaurant Hanakazura

Located inside Otaru Kihinkan (Old Aoyama Villa), the restaurant offers herring multi-tiered food box, herring soba noodles, light meals and more.

🏠 3-63 Shukutsu ☎ +81-134-24-0024  
🕒 [Apr.-Oct.]11:00-17:00 [Nov.-Mar.]11:00-16:00  
📅 Year-end and New Year holidays (Dec.26-Jan.7)

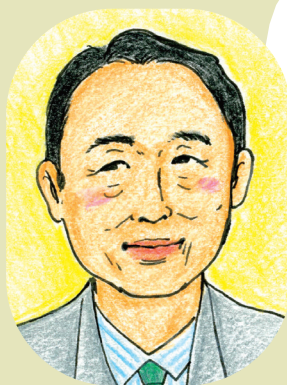
【Symbol explanation】 🏠 Address ☎ Tel. 🕒 Business hours 📅 Regular holidays

## Your guides on this course



“Otaru Annainin (guide)” Meister Mr. Morita

A place that would have Hitchcock himself terrified. The blue sea turning white? Ghosts showing up at noon?...Shukutsu is an area known for strange phenomena like the sea turning white with gerring soft roe (Kuki) or the mirage called “Takashima Ghost”.



“Otaru Annainin (guide)” Meister Mr. Morishita

This course allows you to take a tourist boat around Otaru Port, Akaiwa, and the Otamoi Shore. In Shukutsu, overlooking the Ishikari Bay, you will still feel the people for whom the herring was their life. This is your chance to really understand the culture that herring engendered.

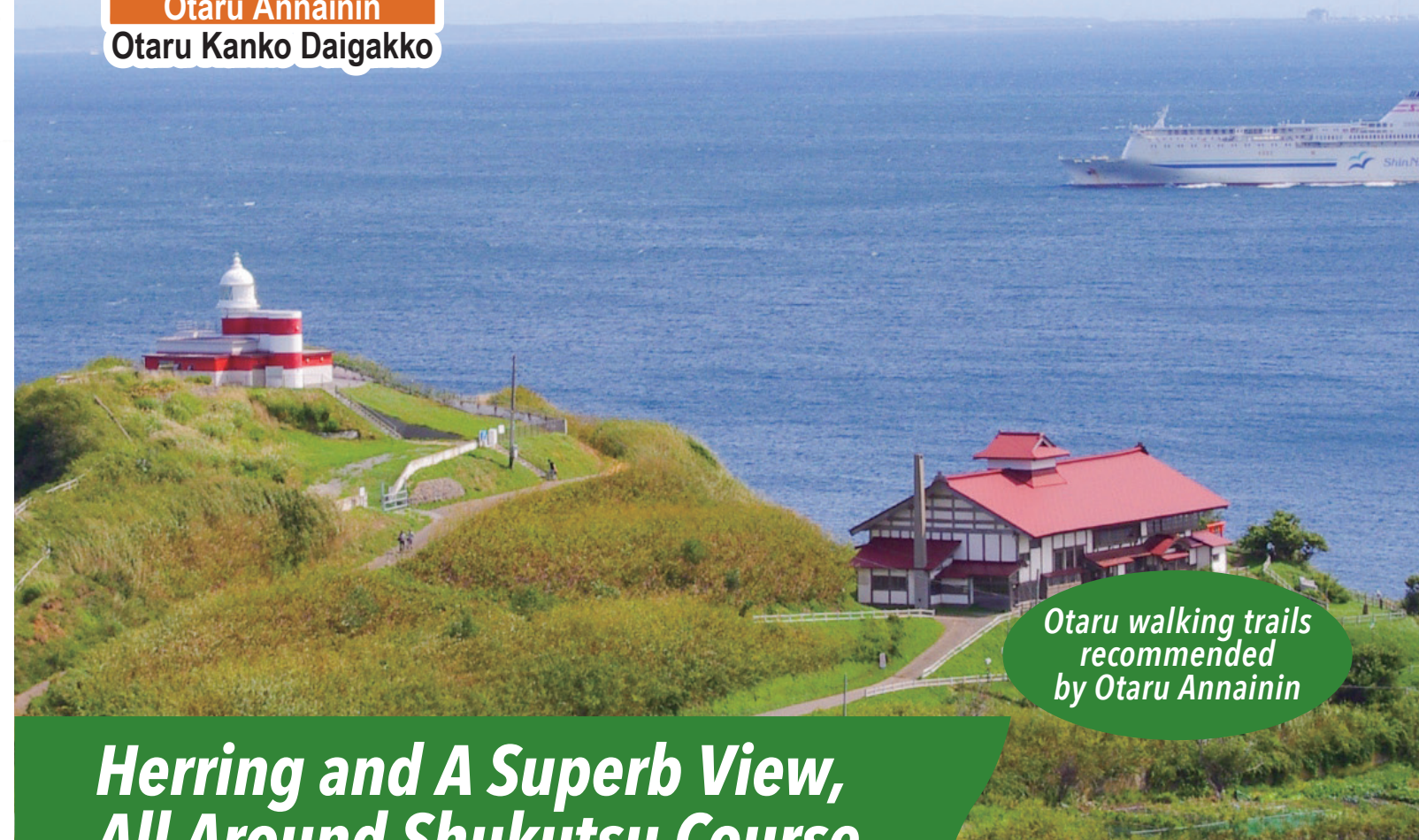
## Otaru City Hall Tourism Promotion Office

4-3 Minatomachi, Otaru, Hokkaido 047-0007 TEL +81-134-32-4111(ex.7450) FAX +81-134-27-8600  
[E-mail] kanko@city.otaru.lg.jp [URL] https://www.city.otaru.lg.jp/

※Created : May 2009  
Revised : March 2025



Otaru Annainin  
Otaru Kanko Daigakko



Otaru walking trails recommended by Otaru Annainin

## Herring and A Superb View, All Around Shukutsu Course

Shukutsu is a neighborhood where you can feel the atmosphere of herring fishing village prospered in the past. There're Ebisu shrine, Banya (hut to stay) and houses the fishermen used in the past. The beautiful sea and the cliff along with the shore are designated as quasi-national park. From Shukutsu Panorama Observatory, you can look around the great view including Otaru Nishin Goten (Herring-Mansion) and Hiyoriyama Lighthouse at the Cape Takashima. Please enjoy the history of herring fishing with the beautiful scenery and fresh seafoods.

## How to Reach the Course Starting Point

### MAP ① Cruise Ship Dock

This course starts by boarding Shukutsu Route on the sightseeing boat “Aobato” from the Cruise Ship Dock at Pier No.3.

🏠 4-2 Minatomachi ☎ +81-134-29-3131  
🕒 10 : 00-17 : 00 (May vary by day of the week and season.) In service from late April - mid-October.  
📅 Closed in winter, in the event of inclement weather

○Nearest Tourist Spots :  
Otaru Canal (Chuo Bridge), Otaru International Information Center, Otaru Canal Cruise  
○Fares :  
Shukutsu Route (one-way 20 minutes) Adult 1100 yen, Child 550 yen

☆Access :  
Walk from JR Otaru Station about 10 minutes straight towards the sea. At the base of Pier No.3, you will find the Cruise Ship Dock. A car parking area (paid) is also available.





## Tourist Spot Information



### MAP ① Cruise Ship Dock (☎+81-134-29-3131)

The gate is at the base of Pier No.3, straight down Chuodori Street from JR Otaru Station towards the sea. Ship service is available late April to mid-October. Fare starts at 1100 yen for adults, depending on the route.

↓ 20 minutes by cruise ship



### MAP ② Shukutsu Fishing Port

This attractive port still retains the old fishing villages. Known as a 'gold mine' of herring in the past, today it is a place for harvesting scallops, sea urchin, abalone, flounder, and more.

↓ 10-minute Walk



### MAP ③ Otaru Nishin Goten (Herring Mansion) (☎+81-134-22-1038)

You can learn about the herring fishery. Open from the beginning of April to the end of November. Admission fees: Adults for 300 yen, High school students for 150 yen.

↓ 2-minute Walk



### MAP ④ Hiyoriyama Lighthouse

It was built as a white wooden hexagonal lighthouse in 1883.

↓ 8-minute Walk



### MAP ⑤ Otaru Aquarium (☎+81-134-33-1400)

Daily performances with popular animals! Open at 9:00. Admission fees: Adults for 1800 yen, Elementary and junior high school students for 700 yen. <Winter> Open at 10:00 Admission fees: Adults for 1300 yen, Elementary and junior high school students for 500 yen.

↓ 7-minute Walk



### MAP ⑥ Shukutsu Panorama Observatory

The Sea of Japan is spreading in front of your eyes and the horizon looks in round shape. Best location to see the sunrise and sunset.

↓ 15-minute Walk



### MAP ⑦ Otaru Kihinkan (☎+81-134-24-0024)

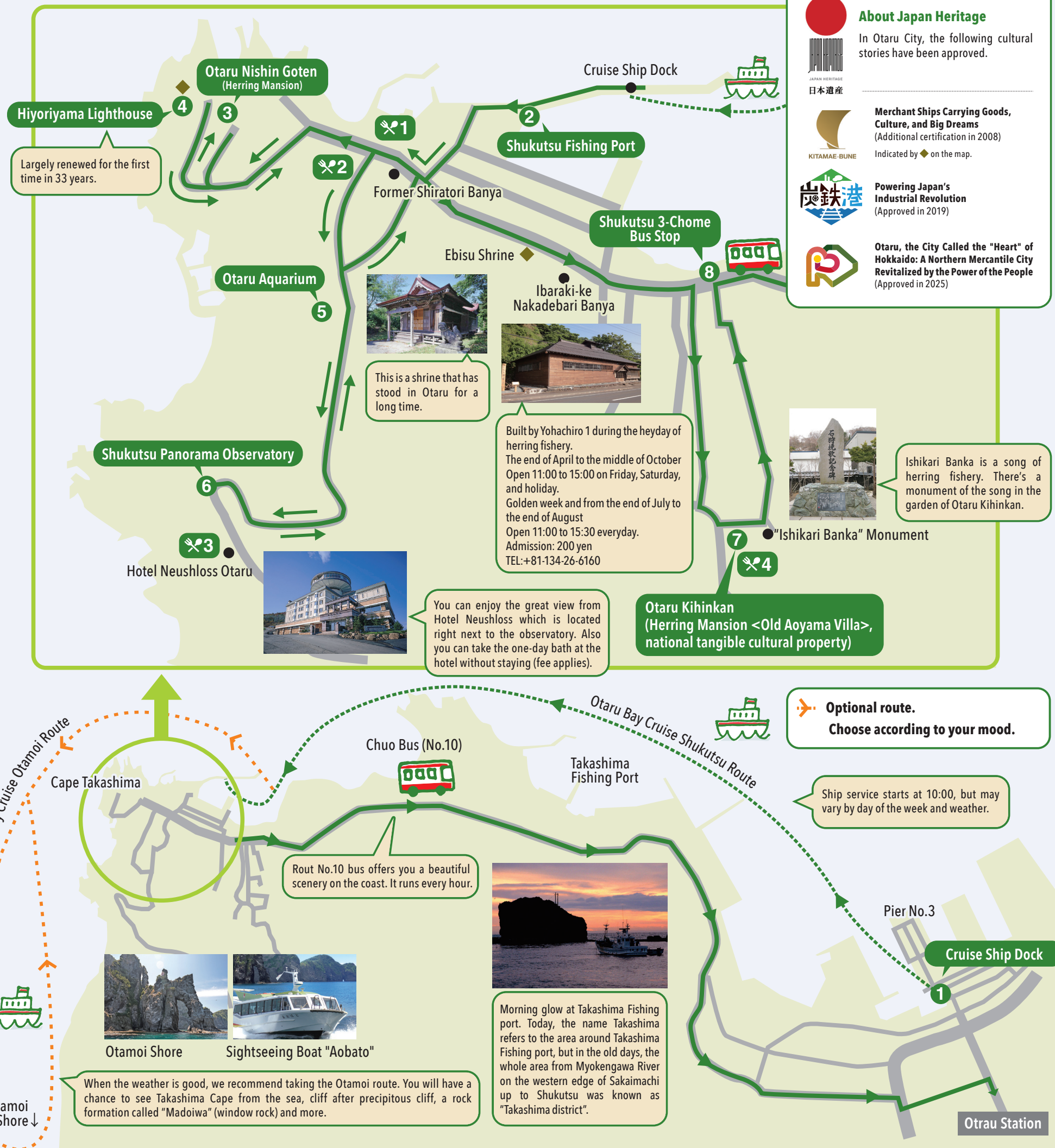
There's the Old Aoyama Villa designated as Registered Tangible Cultural Property of Japan (Available for visit) Open from 9:00 to 17:00 (Close at 16:00 from November to March.) Admission fees: Adults for 1300 yen, Elementary and junior high school students for 650 yen.

↓ 7-minute Walk



### MAP ⑧ Shukutsu 3-Chome Bus Stop

No.10 and 11 buses go to Otaru Station. Please check the Chuo Bus website for the bus schedule.



Herring and A Superb View, All Around Shukutsu Course